



TO LET

Cardinal Road, Feltham, TW13 5AL
£1,900 Per Calendar Month

DBK
ESTATE AGENTS

- Available To Rent Immediately!
- Stunning Split-Level Apartment
- Two Sizeable Bedrooms
- Modern Fitted Kitchen with Integrated Appliances
- Stylish Family Bathroom/ WC
- Open Plan Living
- Large Mezzanine
- Secure Entry System
- Private Garden Area
- Walking Distance To Feltham Station and Town Centre

THE PROPERTY

AVAILABLE TO RENT IMMEDIATELY!

This exceptional split-level apartment offers contemporary living with a spacious and stylish design, perfect for professionals, couples, or small families seeking comfort and convenience.

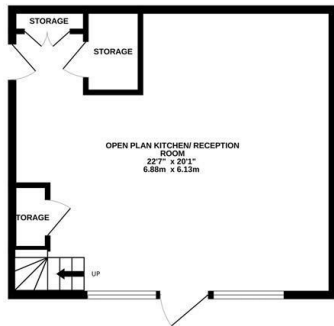
Upon entering, you're welcomed by a beautifully designed open-plan living area, bathed in natural light, creating a warm and inviting atmosphere. The sleek and modern fitted kitchen is fully equipped with integrated appliances, ensuring a seamless cooking experience while maintaining a clean and sophisticated aesthetic.

The property boasts two generously sized bedrooms, both offering ample space for relaxation and storage. The stunning large mezzanine level adds a unique architectural feature, perfect for a home office, additional lounge area, or creative space.

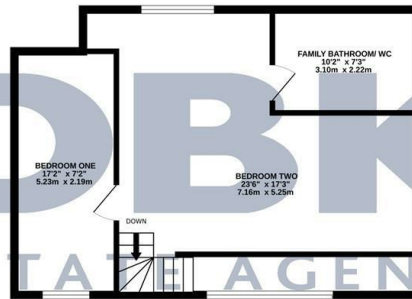
A stylish family bathroom/WC is finished to a high standard, providing a luxurious retreat with contemporary fixtures and fittings. For added security and peace of mind, the apartment benefits from a secure entry system. A private garden area provides a serene outdoor space, ideal for unwinding or entertaining guests.

Situated in the London Borough of Hounslow, TW13 5AL offers excellent connectivity and local amenities. Feltham Station is just a short walk away, providing direct rail links to Central London, while several bus routes serve the area. The location boasts a mix of housing options, from apartments to

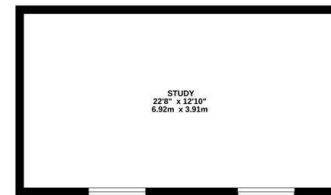
GROUND FLOOR
454 sq.ft. (42.2 sq.m.) approx.



1ST FLOOR
595 sq.ft. (51.6 sq.m.) approx.



2ND FLOOR
291 sq.ft. (27.0 sq.m.) approx.



TOTAL FLOOR AREA: 1300 sq.ft. (120.8 sq.m.) approx.

Whilst every attempt has been made to ensure the accuracy of the floorplan contained here, measurements of doors, windows, rooms and any other items are approximate and no responsibility is taken for any error, omission or mis-statement. This plan is for illustrative purposes only and should be used as such by any prospective purchaser. The services, systems and appliances shown have not been tested and no guarantee as to their operability or efficiency can be given.
Made with Metropix ©2025